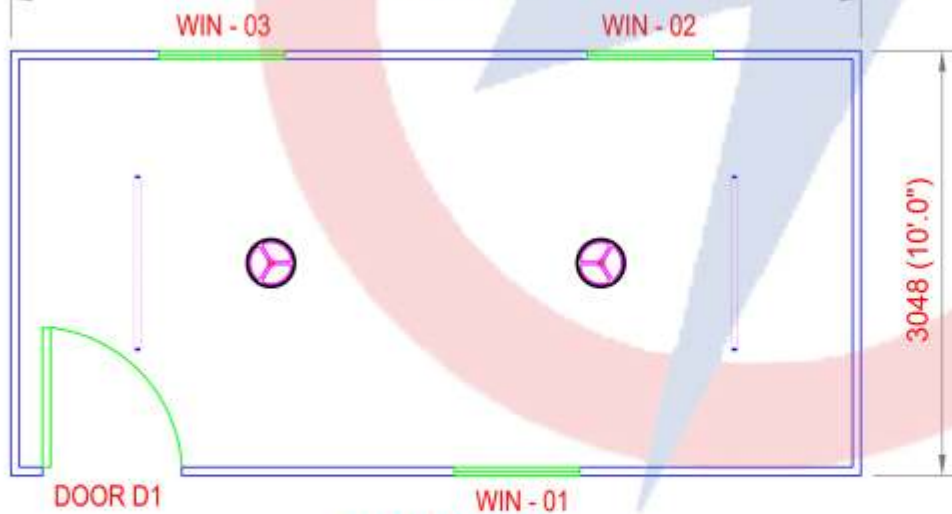


FRONT ELEVATION


SIDE ELEVATION

SATEC ENVIR ENGG (I) PVT. LTD 6096 (20'.0'') ENGG (I) PVT. LTD SATEC ENVIR ENGG (I) PVT. LTD SATEC ENVIR ENGG (I) PVT. LTD

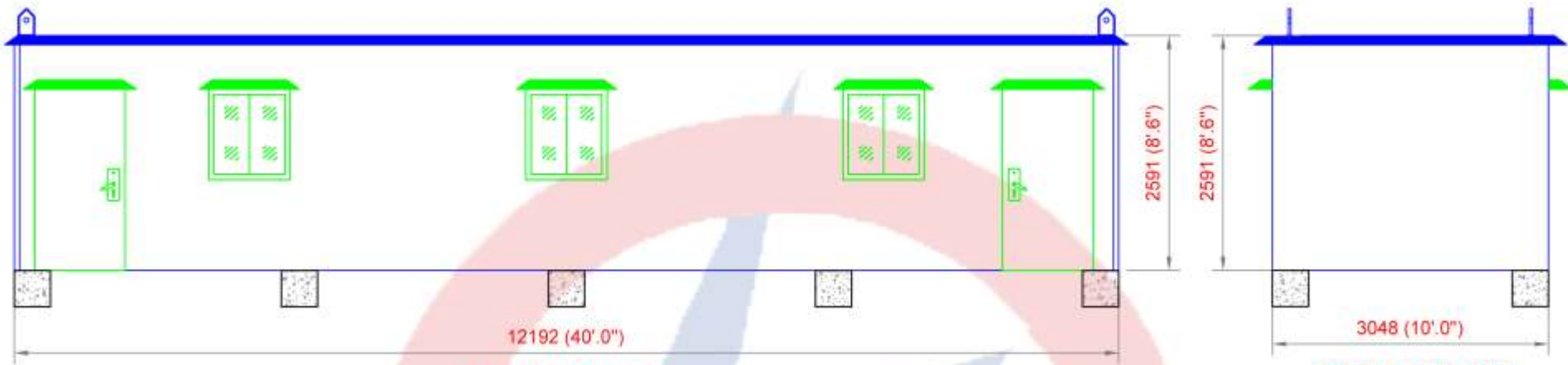


PLAN VIEW

DOOR	950 mm X 2050 mm	01
WINDOW	900 mm X 1000 mm	03

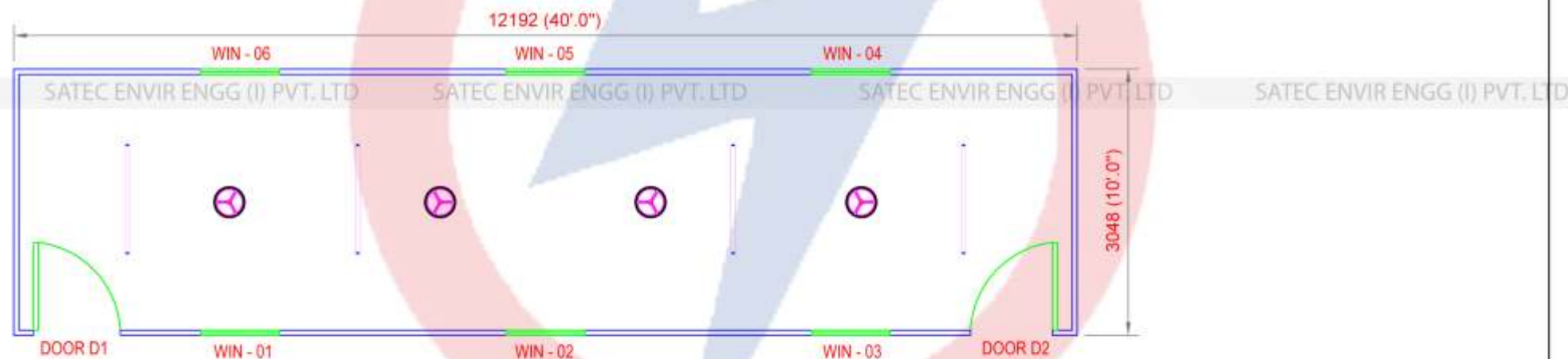
	SATEC ENVIR. ENGG. (I) PVT. LTD. FAIRLINK COMPLEX, 6TH FLOOR, 'B' WING, NEAR MONGENESE FACTORY, OFF LINK ROAD, ANDHERI (W), MUMBAI- 400 053 INDIA			
	CLIENT:-			
DRAWING TITLE:- CONTAINER (20' x 10' x 8'.6'')				
PROJECT	DATE	DRAWING NO.	REV.	SHEET
	03/08/2011	00	00	1/1
DRG. STATUS	PREPARED	CHECKED	APPROVED	SCALE
FOR APPROVAL	MANISH			NTS

All information contained in this drawing are proprietary to SATEC and should not be used by any third party without its prior written consent.



FRONT ELEVATION

SIDE ELEVATION



PLAN VIEW

DOOR	950 mm X 2050 mm	02
WINDOW	900 mm X 1000 mm	06

SATEC ENVIR. ENGG. (I) PVT. LTD.
 FAIRLINK COMPLEX, 6TH FLOOR, 'B' WING, NEAR MONGENESE FACTORY,
 OFF LINK ROAD, ANDHERI (W), MUMBAI- 400 053 INDIA

CLIENT:-

DRAWING TITLE:- CONTAINER (40' x 10' x 8'6")

PROJECT	DATE	DRAWING NO.	REV.	SHEET
	03/08/2011	00	00	1/1
DRG. STATUS	PREPARED	CHECKED	APPROVED	SCALE
FOR APPROVAL	MANISH			NTS

All information contained in this drawing are proprietary to SATEC and should not be used by any third party without its prior written consent.